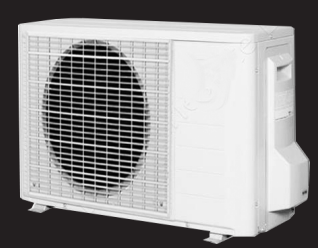
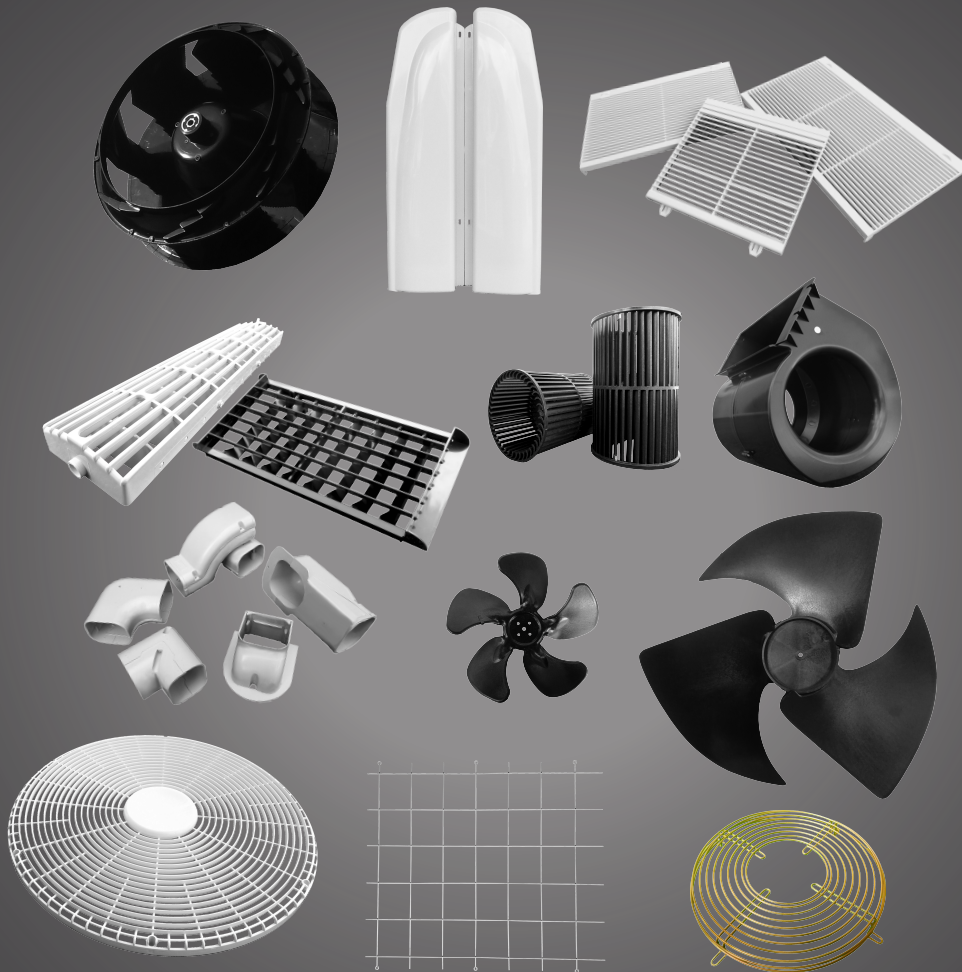


# S.P.E. PLASTIC CO.,LTD.

Air-conditioner plastic parts  
injection molding manufacturing

บริษัทผู้ผลิตงานฉีดพลาสติก  
กลุ่มอุตสาหกรรมชิ้นส่วนเครื่องปรับอากาศ



ISO9001:2015 Certified  
Certificate number 26Q19616



Thai company, Production in Thailand  
บริษัทของคนไทย, ผลิตในประเทศไทย



[www.speplastic.com](http://www.speplastic.com)  
scan QR code to enter our website



# Company profile

Company name	S.P.E. PLASTIC CO.,LTD.
Company address	45, 47, 49, 51, 53, 55 Soi Rama2(44) Rama2 Rd. T. Chomthong A. Chomthong Bnagkok 10150 Thailand
Certified standard	 ISO9001:2015 Certificate number 26Q19616
TEL	+662 898 4974 - 75
FAX	+662 898 4977
Email	contact@speplastic.com sales@speplastic.com
Website	www.speplastic.com
Year of establishment	29 April 1993
Share holder	100% Thai S.P.E. PLASTIC CO.,LTD.
Registered capital	5,000,000 THB.
Number of employee	48 persons
Main products	Plastic blower wheels for split type air- conditioner Plastic blower wheels for cassette type air-conditioner Plastic blower wheels for package type air- conditioner Plastic blower wheels for window type air- conditioner. Propeller fan for condensing unit Propeller fan for chiller Plastic housing for blower wheels Fan guard (Plastic/ Metal) Condensing guard Air-conditioner parts and accessories ex. Side panel, Discharge grill, Return grill, Filter

# Contents

<u>Products</u>	<u>Page</u>
Blower wheels Dia. 115 x 42 blades	1
Two pieces housing	1
Standard blower wheels	2
Special blower wheels	3
High efficiency blower wheels (Fireproof)	3
Blower wheels for package type air-conditioner	4
Blower wheels for window type air-conditioner	4
Blower wheels for cassette type air-conditioner	5
Single inlet blower wheels	6
Round type housing	6
Flat type housing	7
Special housing	7
High efficiency housing (Fireproof)	8
Propeller fan for chiller	8
Propeller fan for window type air-conditioner	10
Propeller fan (CCW)	10
Propeller fan (CW)	13
Fan guard (Plastic)	14
Fan guard type B (Metal)	15
Fan guard type D (Metal)	15
Fan guard type E (Metal)	16
Fan guard type O (Metal)	16
Chiller fan guard	16
Motor support	17
Condensing guard (Metal)	17
Side panel A	18
Side panel P	18
Side panel U	18
Display & Support bar	19
Return A	20
Return C	20
Return P	20
Discharge grill for split type air-conditioner	21
Discharge grill for package type air-conditioner	21
Return grill for package type air-conditioner	21
Handle bar	22
Blower set for vehicle	22
Accessories	23

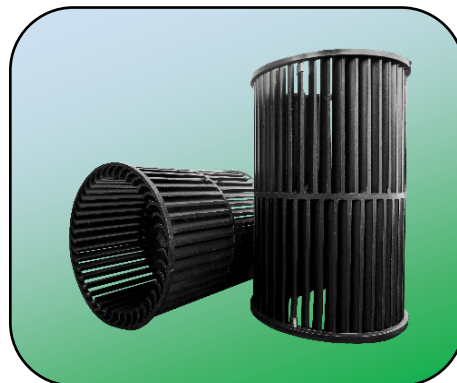
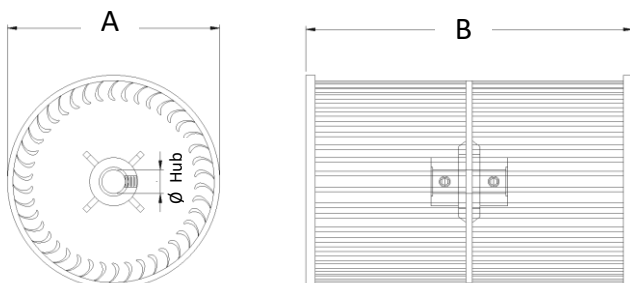


S.P.E. PLASTIC CO., LTD. with ISO9001:2015 certified



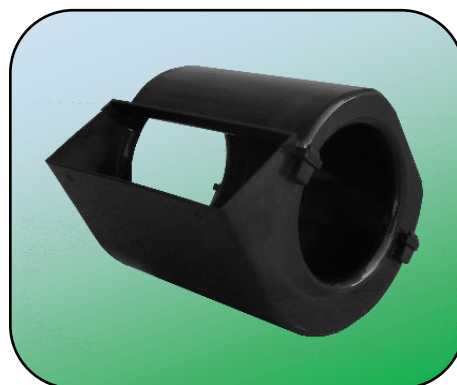
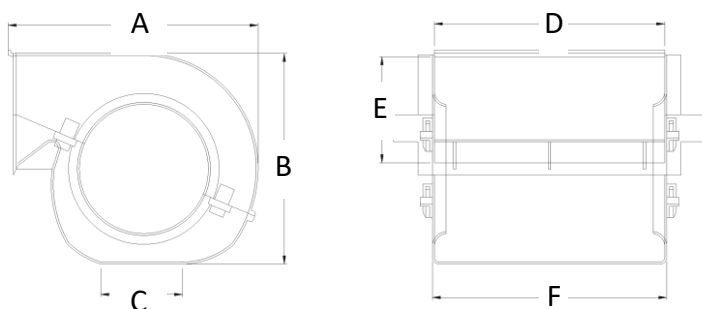
Address 45, 47, 49, 51, 53, 55 Soi Rama2(44) Rama2 Rd. T.Chomthong A.Chomthong 10150 Bangkok Thailand  
 Tel: +662 898 4974-75 Fax: +662 898 4977 E-mail: contact@speplastic.com, sales@speplastic.com Website: www.speplastic.com

**Blower wheels Dia. 115 x 42 blades** (Special Hub 8, 10, 12, 14, 15 mm. also available)



DESCRIPTION	CODE	DIMENSION (mm.)		BLADES	HUB (mm.)	MATERIAL	QUANTITY PCS/BOX	UNIT PRICE
		A	B					
BLOWER WHEELS	CE6	114	147	42	ø12.7	ABS+FIBER	20	
	CE7	116	177				18	
	CE9	115	225				36	

**Two pieces housing**



DESCRIPTION	CODE	DIMENSION (mm.)						MATERIAL	QUANTITY PCS/BOX	UNIT PRICE
		A	B	C	D	E	F			
HOUSING	BCE6	180	154	70	170	90	175	ABS, HIPS	18	
	BCE7		152		205		208			
	BCE8	188	190	65	225		225			
	BCE9	180	158	70	255		255			

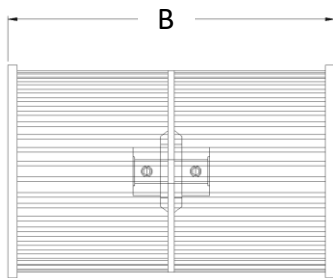
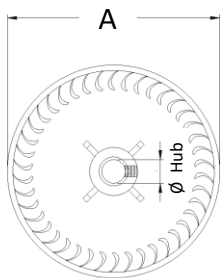


S.P.E. PLASTIC CO., LTD. with ISO9001:2015 certified



Address 45, 47, 49, 51, 53, 55 Soi Rama2(44) Rama2 Rd. T.Chomthong A.Chomthong 10150 Bangkok Thailand  
 Tel: +662 898 4974-75 Fax: +662 898 4977 E-mail: contact@speplastic.com, sales@speplastic.com Website: www.speplastic.com

**Standard blower wheels** (Special Hub 8, 10, 12, 14, 15 mm. also available)



DESCRIPTION	CODE	DIMENSION (mm.)		BLADES	HUB (mm.)	MATERIAL	QUANTITY PCS/BOX	UNIT PRICE
		A	B					
BLOWER WHEELS	B630	142	149	30	ø12.7	ABS+FIBER	36	
	B638			38				
	B642		42					
	B730		30					
	B742	42	200	24				
	B830	30						
	B838	38						
	B842	145	42					
	B930	143	224				30	
	B938	145					38	
	B942						42	



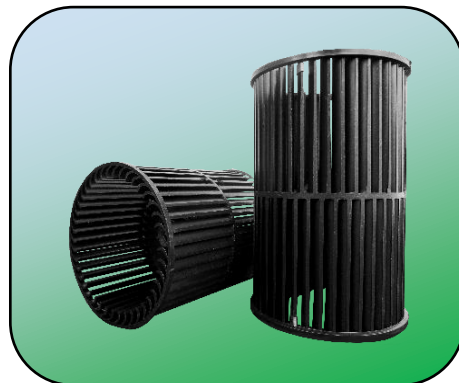
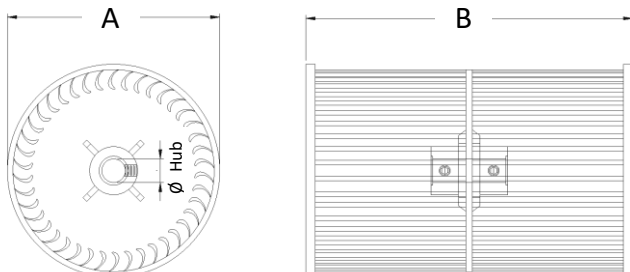
S.P.E. PLASTIC CO., LTD. with ISO9001:2015 certified



Address 45, 47, 49, 51, 53, 55 Soi Rama2(44) Rama2 Rd. T.Chomthong A.Chomthong 10150 Bangkok Thailand

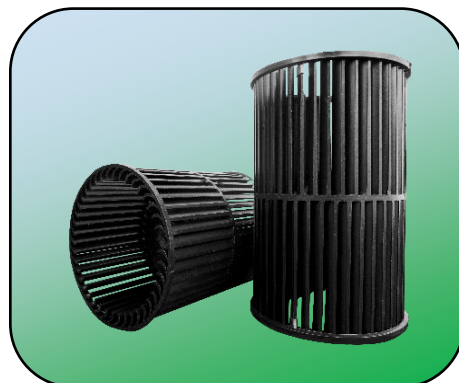
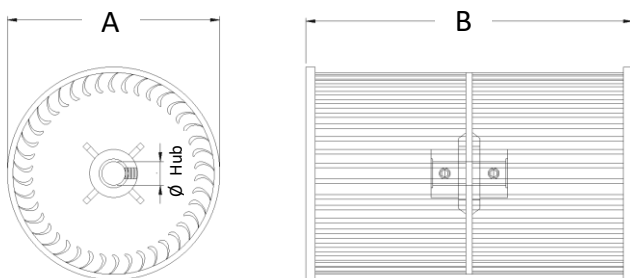
Tel: +662 898 4974-75 Fax: +662 898 4977 E-mail: contact@speplastic.com, sales@speplastic.com Website: www.speplastic.com

**Special blower wheels** (Special Hub 8, 10, 12, 14, 15 mm. also available)



DESCRIPTION	CODE	DIMENSION (mm.)		BLADES	HUB (mm.)	MATERIAL	QUANTITY PCS/BOX	UNIT PRICE
		A	B					
BLOWER WHEELS	B4545	115		42	ø12.7	ABS+FIBER	36	
	B5938	128	229	38			30	
	B6585	163	216	42			12	
	B6642	153	155	40			30	
	B6840	156	203	42			24	
	B6942	155	229	42				

**High efficiency blower wheels (Fireproof)**

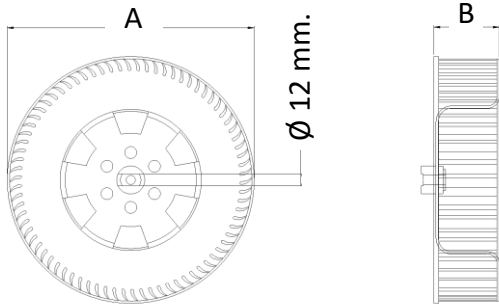


DESCRIPTION	CODE	DIMENSION (mm.)		BLADES	HUB (mm.)	MATERIAL	QUANTITY PCS/BOX	UNIT PRICE
		A	B					
BLOWER WHEELS	B7440	185	105	40	ø12.7	ABS V0 + FIBER	12	
	B7640		153					
	B7740		178					
	B7942	210	229	42			10	
	B8842		203					
	B8942		229					
	B9941	235	221	41			8	
	B91041		246					



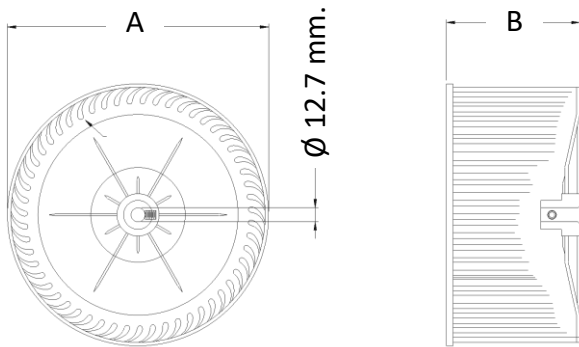
Address 45, 47, 49, 51, 53, 55 Soi Rama2(44) Rama2 Rd. T.Chomthong A.Chomthong 10150 Bangkok Thailand  
 Tel: +662 898 4974-75 Fax: +662 898 4977 E-mail: contact@speplastic.com, sales@speplastic.com Website: www.speplastic.com

**Blower wheels for package type air-conditioner**



DESCRIPTION	CODE	DIMENSION (mm.)		BLADES	HUB (mm.)	MATERIAL	QUANTITY PCS/BOX	UNIT PRICE
		A	B					
BLOWER PACKAGE	BP123	318	85	78	Ø12.7	AS+FIBER	10	
	BP125		135				8	
	BP155	380	132	43			6	
	BP157	384	180					

**Blower wheels for window type air-conditioner**

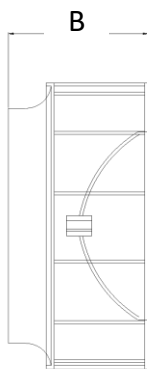
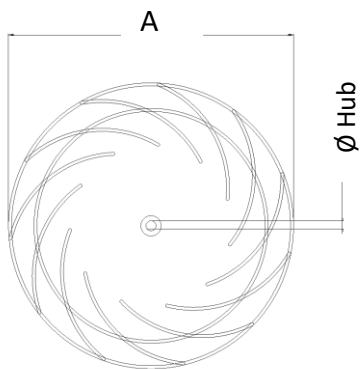


DESCRIPTION	CODE	DIMENSION (mm.)		BLADES	HUB (mm.)	MATERIAL	QUANTITY PCS/BOX	UNIT PRICE
		A	B					
BLOWER WHEELS	WDY 82	218	67	38	Ø12.7	ABS+FIBER	18	
	WDY 8	226	110	48			10	
	WDJ 9	236	120	55			16	

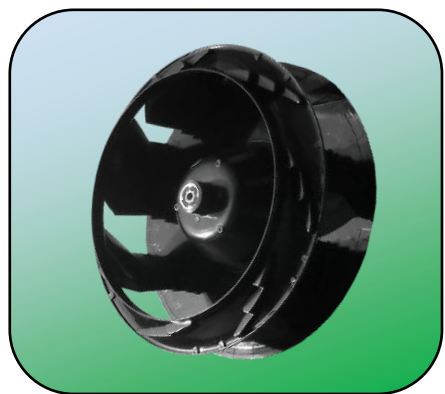
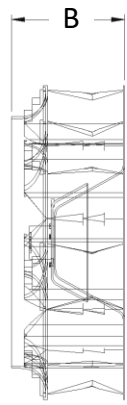
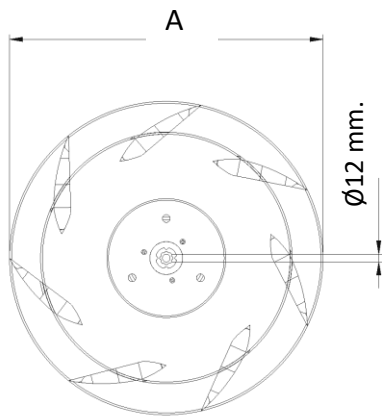


Address 45, 47, 49, 51, 53, 55 Soi Rama2(44) Rama2 Rd. T.Chomthong A.Chomthong 10150 Bangkok Thailand  
 Tel: +662 898 4974-75 Fax: +662 898 4977 E-mail: contact@speplastic.com, sales@speplastic.com Website: www.speplastic.com

**Blower wheels for cassette type air-conditioner**



DESCRIPTION	CODE	DIMENSION (mm.)		BLADES	HUB (mm.)	MATERIAL	QUANTITY PCS/BOX	UNIT PRICE
		A	B					
BLOWER CASSETE	BC8.5	220	64	11	ø8	AS+FIBER	18	
	BC11	282	135	13			12	
	BC15	391	198		ø14		6	



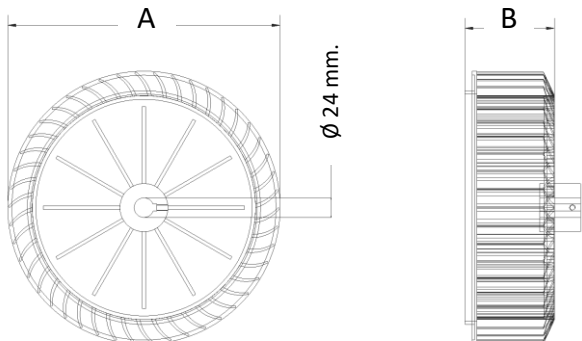
DESCRIPTION	CODE	DIMENSION (mm.)		BLADES	HUB (mm.)	MATERIAL	QUANTITY PCS/BOX	UNIT PRICE
		A	B					
BLOWER CASSETE	BC20	476	173	7	ø12	AS+FIBER	2	





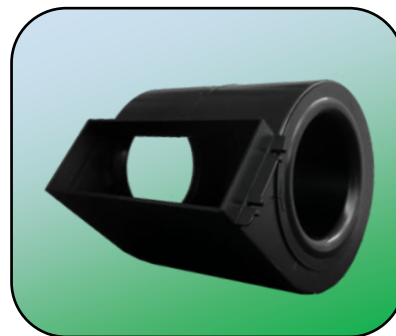
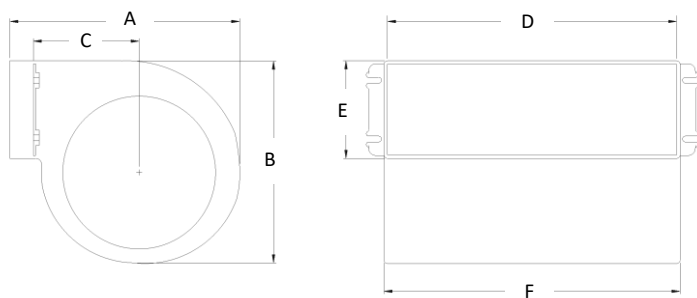
Address 45, 47, 49, 51, 53, 55 Soi Rama2(44) Rama2 Rd. T.Chomthong A.Chomthong 10150 Bangkok Thailand  
 Tel: +662 898 4974-75 Fax: +662 898 4977 E-mail: contact@speplastic.com, sales@speplastic.com Website: www.speplastic.com

**Single inlet blower wheels**



DESCRIPTION	CODE	DIMENSION (mm.)		BLADES	HUB (mm.)	MATERIAL	QUANTITY PCS/BOX	UNIT PRICE
		A	B					
SINGLE INLET BLOWER	B1345	334	111	46	ø24	PP+FIBER	4	
	B1455	370	120	40				

**Round type housing**



DESCRIPTION	CODE	DIMENSION (mm.)						MATERIAL	QUANTITY PCS/BOX	UNIT PRICE
		A	B	C	D	E	F			
ROUND HOUSING	BB6R	216	203	92	171	88	178	HI PS	18	
	BB7R				200		205			
	BB8R				224		230			
	BB9R				247		253			

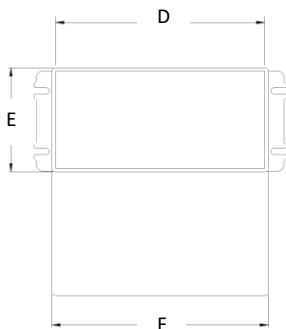
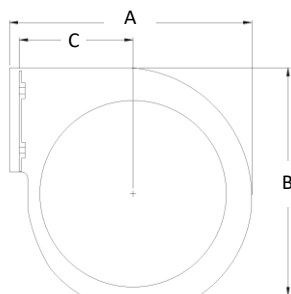


S.P.E. PLASTIC CO., LTD. with ISO9001:2015 certified



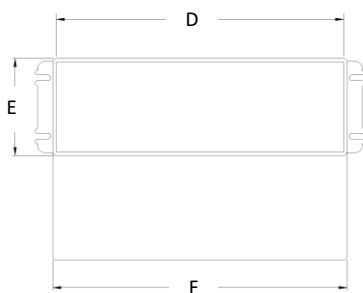
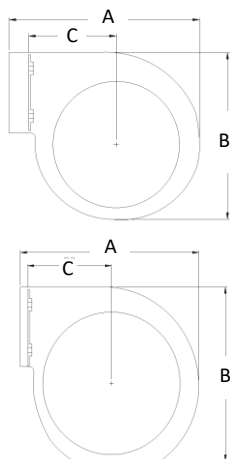
Address 45, 47, 49, 51, 53, 55 Soi Rama2(44) Rama2 Rd. T.Chomthong A.Chomthong 10150 Bangkok Thailand  
 Tel: +662 898 4974-75 Fax: +662 898 4977 E-mail: contact@speplastic.com, sales@speplastic.com Website: www.speplastic.com

**Flat type housing**



DESCRIPTION	CODE	DIMENSION (mm.)						MATERIAL	QUANTITY PCS/BOX	UNIT PRICE
		A	B	C	D	E	F			
FLAT HOUSING	BB6F	203	194	92	173	86	179	HI PS	18	
	BB7F				199		205			
	BB8F				225		230			
	BB9F				248		254			

**Special housing**

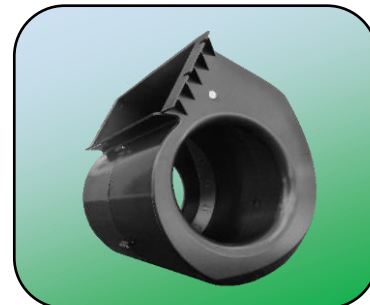
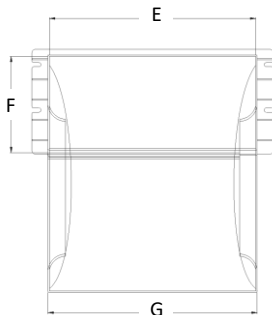
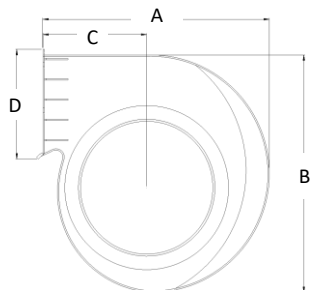


DESCRIPTION	CODE	DIMENSION (mm.)						MATERIAL	QUANTITY PCS/BOX	UNIT PRICE
		A	B	C	D	E	F			
ROUND HOUSING	BB4545R	167	155	77.5	133	73	138	HI PS	24	
	BB5938R	183	173	89	245	82	255		12	
FLAT HOUSING	BB6585F	223	228	97	253	104	260		8	
ROUND HOUSING	BB66 K	216	202	94	174	106	180		12	
	BB69 K		203		260		105.5	266		



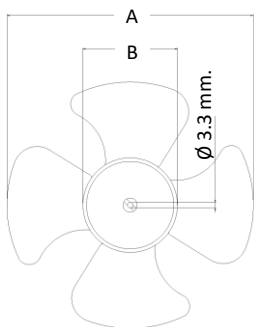
Address 45, 47, 49, 51, 53, 55 Soi Rama2(44) Rama2 Rd. T.Chomthong A.Chomthong 10150 Bangkok Thailand  
 Tel: +662 898 4974-75 Fax: +662 898 4977 E-mail: contact@speplastic.com, sales@speplastic.com Website: www.speplastic.com

**High efficiency housing (Fireproof)**



DESCRIPTION	CODE	DIMENSION (mm.)							MATERIAL	QUANTITY PCS/BOX	UNIT PRICE
		A	B	C	D	E	F	G			
HIGH EFFICIENCY H.	BB7x4	258	265	123	130	144	107	150	ABS V0	4	
	BB7x6					196		202			
	BB7x7					222	105	228			
	BB7x8					248	107	254			
	BB7x9					272	105	278			
	BB8x7	290	310	134	150	222	127	230		2	
	BB8x8					249	127	255			
	BB8x9					274	126	281			
	BB9x9	325	340	149	157	268	138	275			
	BB9x10					294		300			

**Propeller fan for chiller**



DESCRIPTION	CODE	DIMENSION (mm.)					BLADES	HUB (mm.)	MATERIAL	QUANTITY PCS/BOX	UNIT PRICE
		A	B	C	D	E					
CHILLER FAN	F5.5	135	53	40	20	55°	4	ø3.3	ABS	130	

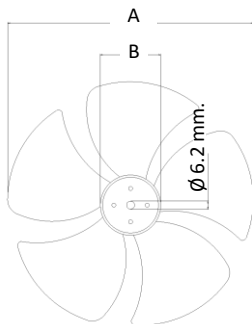


S.P.E. PLASTIC CO., LTD. with ISO9001:2015 certified

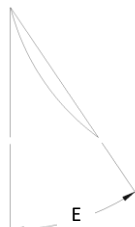
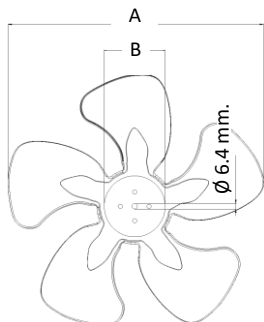


Address 45, 47, 49, 51, 53, 55 Soi Rama2(44) Rama2 Rd. T.Chomthong A.Chomthong 10150 Bangkok Thailand  
 Tel: +662 898 4974-75 Fax: +662 898 4977 E-mail: contact@speplastic.com, sales@speplastic.com Website: www.speplastic.com

**Propeller fan for chiller**



DESCRIPTION	CODE	DIMENSION (mm.)					BLADES	HUB (mm.)	MATERIAL	QUANTITY PCS/BOX	UNIT PRICE
		A	B	C	D	E					
CHILLER FAN	F7.5	175	35	40	28.8	55°	5	ø6.2	PP+FIBER	120	

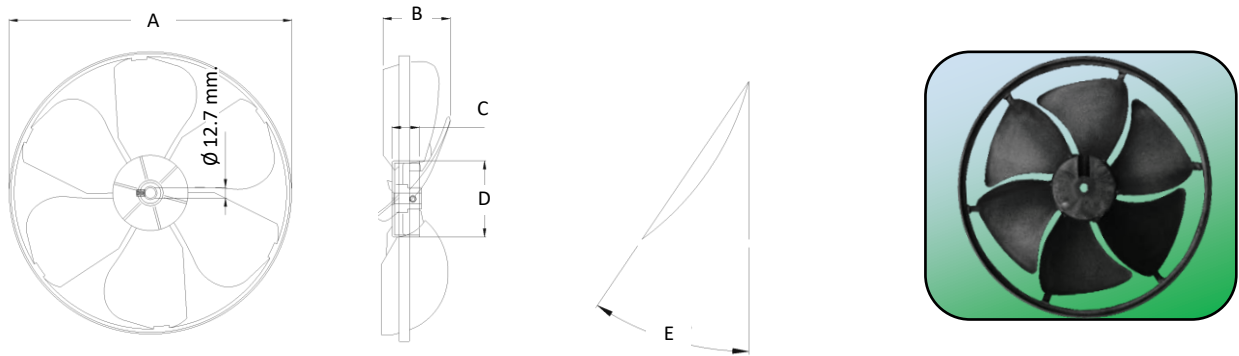


DESCRIPTION	CODE	DIMENSION (mm.)					BLADES	HUB (mm.)	MATERIAL	QUANTITY PCS/BOX	UNIT PRICE
		A	B	C	D	E					
CHILLER FAN	F9.5	235	45.5	65	5	50	5	ø6.4	AS+FIBER	60	



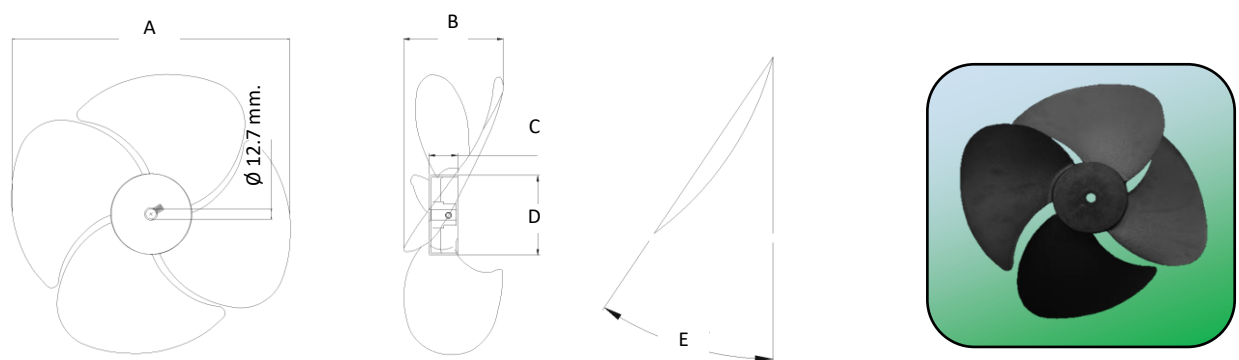
Address 45, 47, 49, 51, 53, 55 Soi Rama2(44) Rama2 Rd. T.Chomthong A.Chomthong 10150 Bangkok Thailand  
 Tel: +662 898 4974-75 Fax: +662 898 4977 E-mail: contact@speplastic.com, sales@speplastic.com Website: www.speplastic.com

**Propeller fan for window type air-conditioner**



DESCRIPTION	CODE	DIMENSION (mm.)					BLADES	HUB (mm.)	MATERIAL	QUANTITY PCS/BOX	UNIT PRICE
		A	B	C	D	E					
CONDENSING FAN	F135 CCW	338	66	35	91	20°	6	ø12.7, ø15	AS+FIBER	15	
	F145 CCW	395	98	49	100	46°				10	
	F153 CCW	390	95		102						

**Propeller fan (CCW)**

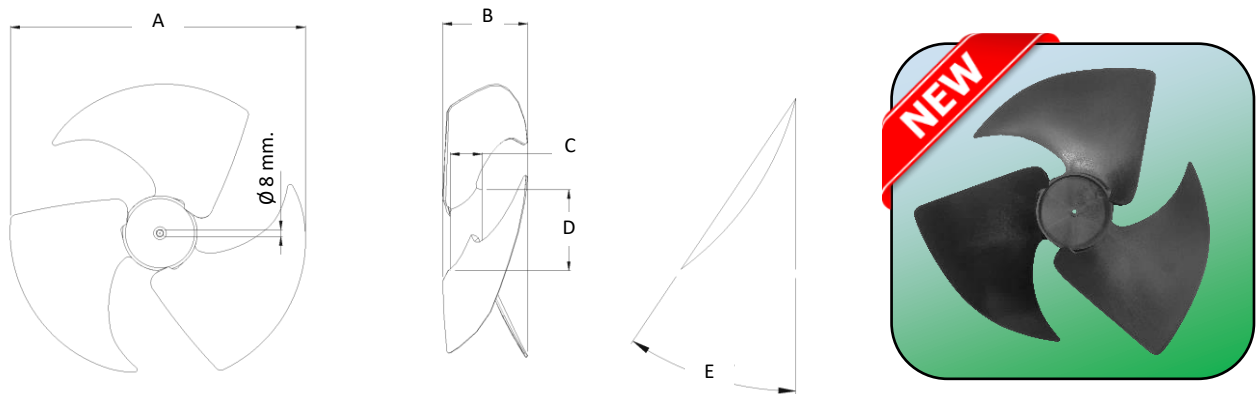


DESCRIPTION	CODE	DIMENSION (mm.)					BLADES	HUB (mm.)	MATERIAL	QUANTITY PCS/BOX	UNIT PRICE
		A	B	C	D	E					
CONDENSING FAN	F144 CCW	350	92	36	100	55°	4	ø8.8, ø12.7	AS+FIBER	15	

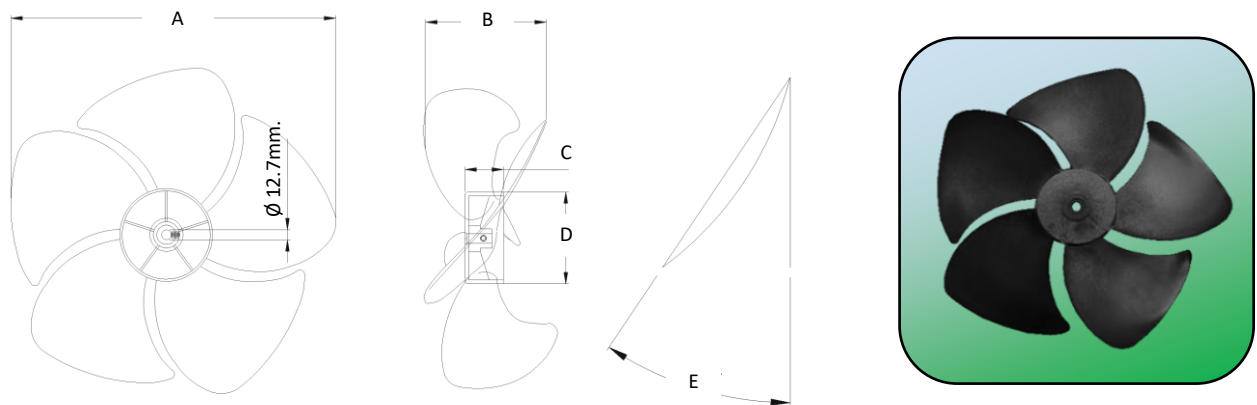


Address 45, 47, 49, 51, 53, 55 Soi Rama2(44) Rama2 Rd. T.Chomthong A.Chomthong 10150 Bangkok Thailand  
 Tel: +662 898 4974-75 Fax: +662 898 4977 E-mail: contact@speplastic.com, sales@speplastic.com Website: www.speplastic.com

**Propeller fan (CCW)**



DESCRIPTION	CODE	DIMENSION (mm.)					BLADES	HUB (mm.)	MATERIAL	QUANTITY PCS/BOX	UNIT PRICE
		A	B	C	D	E					
CONDENSING FAN	F16x3 CCW	406	121	50	100	25	3	ø8, ø12.7	AS+FIBER		

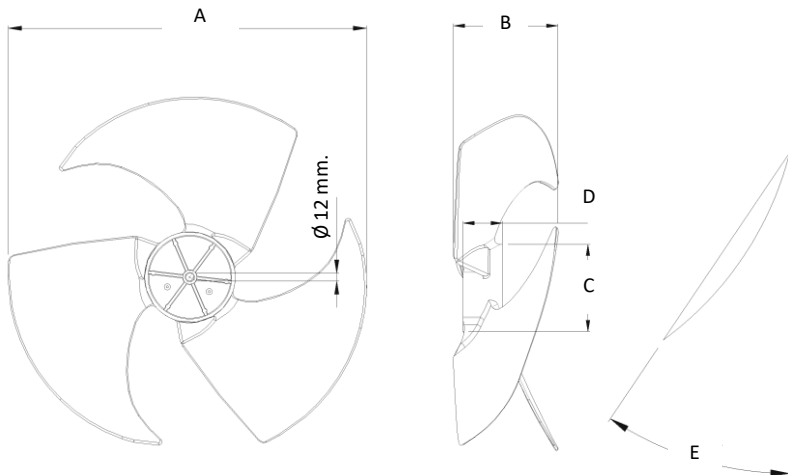


DESCRIPTION	CODE	DIMENSION (mm.)					BLADES	HUB (mm.)	MATERIAL	QUANTITY PCS/BOX	UNIT PRICE
		A	B	C	D	E					
CONDENSING FAN	F185 CCW	450	150	120	50	56°	5	ø12, ø12.7	AS+FIBER	13	
	F205 CCW	500	160	135						10	

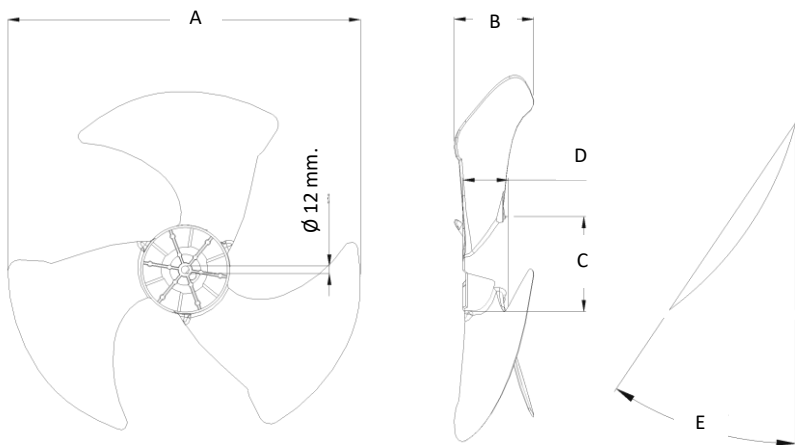


Address 45, 47, 49, 51, 53, 55 Soi Rama2(44) Rama2 Rd. T.Chomthong A.Chomthong 10150 Bangkok Thailand  
 Tel: +662 898 4974-75 Fax: +662 898 4977 E-mail: contact@speplastic.com, sales@speplastic.com Website: www.speplastic.com

**Propeller fan (CCW)**



DESCRIPTION	CODE	DIMENSION (mm.)					BLADES	HUB (mm.)	MATERIAL	QUANTITY PCS/BOX	UNIT PRICE
		A	B	C	D	E					
CONDENSING FAN	F20x3 CCW	510	140	130	60	60	3	ø12, ø12.7	AS+FIBER		

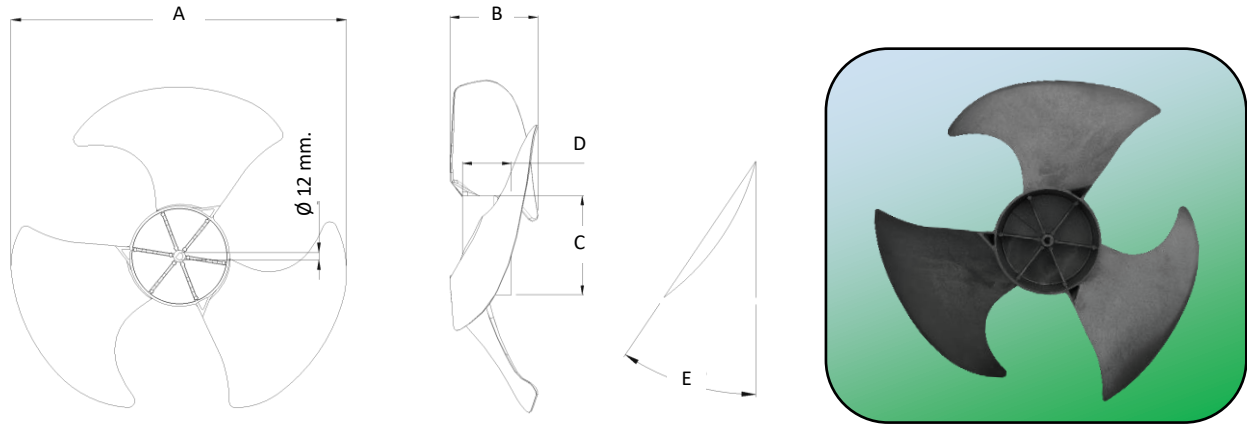


DESCRIPTION	CODE	DIMENSION (mm.)					BLADES	HUB (mm.)	MATERIAL	QUANTITY PCS/BOX	UNIT PRICE
		A	B	C	D	E					
CONDENSING FAN	F22x3 CCW	560	110	138	66	60	3	ø12, ø12.7	AS+FIBER		



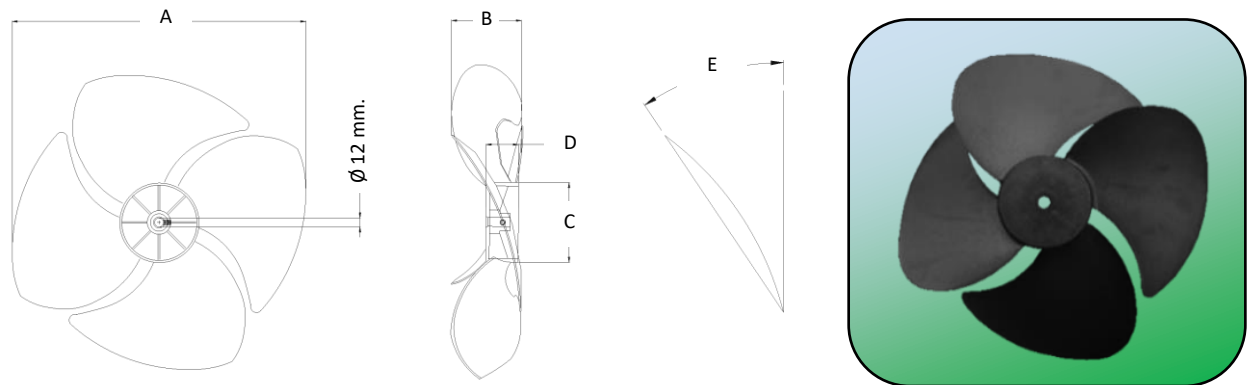
Address 45, 47, 49, 51, 53, 55 Soi Rama2(44) Rama2 Rd. T.Chomthong A.Chomthong 10150 Bangkok Thailand  
 Tel: +662 898 4974-75 Fax: +662 898 4977 E-mail: contact@speplastic.com, sales@speplastic.com Website: www.speplastic.com

**Propeller fan (CCW)**



DESCRIPTION	CODE	DIMENSION (mm.)					BLADES	HUB (mm.)	MATERIAL	QUANTITY PCS/BOX	UNIT PRICE
		A	B	C	D	E					
CONDENSING FAN	F23x3 CCW	565	142	167	83	60	3	ø12, ø12.7	AS+FIBER		

**Propeller fan (CW)** (Special Hub 8, 12 mm. also available)



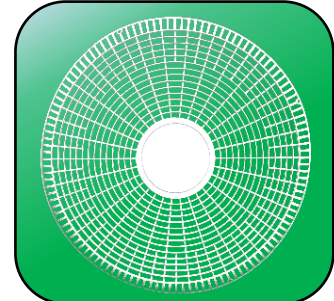
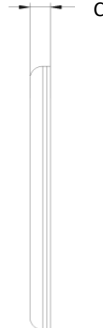
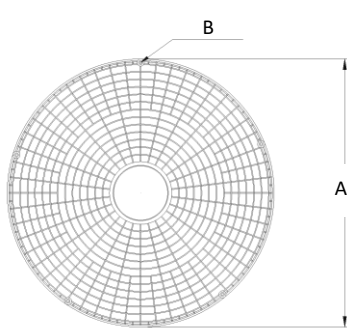
DESCRIPTION	CODE	DIMENSION (mm.)					BLADES	HUB (mm.)	MATERIAL	QUANTITY PCS/BOX	UNIT PRICE
		A	B	C	D	E					
CONDENSING FAN	F164 CW	400	96	105	40	55°	4	ø8, ø12.7	AS+FIBER	15	
	F184 CW	450	105	115	47						



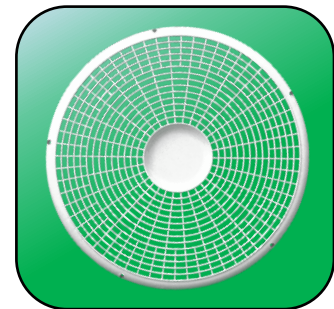
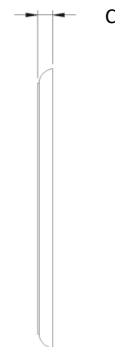
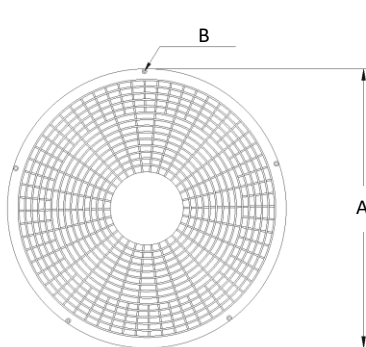


Address 45, 47, 49, 51, 53, 55 Soi Rama2(44) Rama2 Rd. T.Chomthong A.Chomthong 10150 Bangkok Thailand  
 Tel: +662 898 4974-75 Fax: +662 898 4977 E-mail: contact@speplastic.com, sales@speplastic.com Website: www.speplastic.com

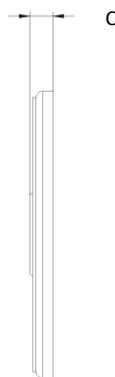
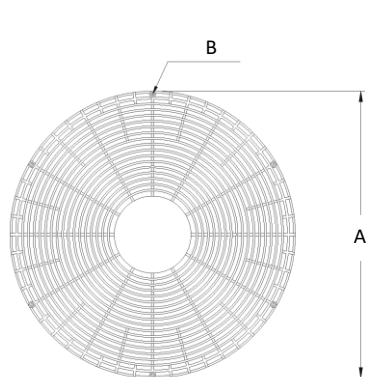
**Fan guard (plastic)**



DESCRIPTION	CODE	DIMENSION (mm.)			MATERIAL	QUANTITY PCS/BOX	UNIT PRICE
		A	B	C			
FAN GUARD	FG-16	445	431x5H	35	ABS	20	
	FG-18	495	481x5H				
	FG-20	555	541x4H	40			



DESCRIPTION	CODE	DIMENSION (mm.)			MATERIAL	QUANTITY PCS/BOX	UNIT PRICE
		A	B	C			
FAN GUARD AS (493)	FG-18AS (493)	493	483x5H	30	ABS	20	



DESCRIPTION	CODE	DIMENSION (mm.)			MATERIAL	QUANTITY PCS/BOX	UNIT PRICE
		A	B	C			
FAN GUARD AS	FG-16AS	448	432x6H	35	ABS	20	
	FG-18AS	500	486x6H				
	FG-20AS	550	536x6H				

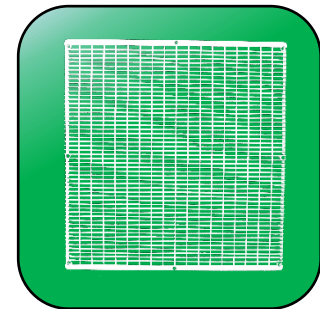
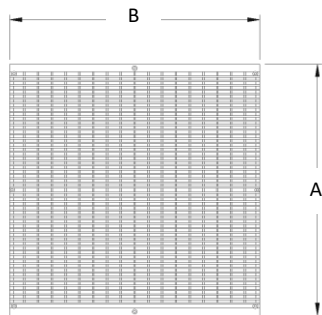


S.P.E. PLASTIC CO., LTD. with ISO9001:2015 certified



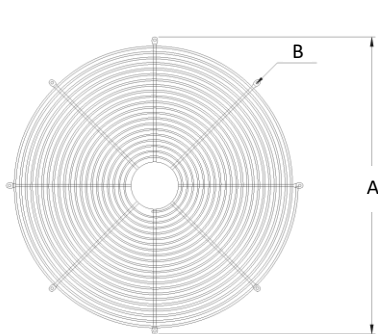
Address 45, 47, 49, 51, 53, 55 Soi Rama2(44) Rama2 Rd. T.Chomthong A.Chomthong 10150 Bangkok Thailand

Tel: +662 898 4974-75 Fax: +662 898 4977 E-mail: contact@speplastic.com, sales@speplastic.com Website: www.speplastic.com



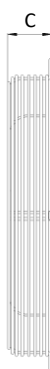
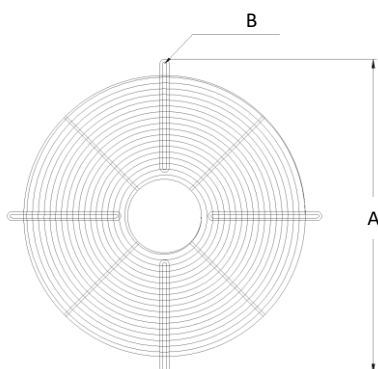
DESCRIPTION	CODE	DIMENSION (mm.)			MATERIAL	QUANTITY PCS/BOX	UNIT PRICE
		A	B	C			
FAN GUARD AS	FGSQ-18	510			ABS		

**Fan guard type B (Metal)**



DESCRIPTION	CODE	DIMENSION (mm.)			MATERIAL	QUANTITY PCS/BOX	UNIT PRICE
		A	B	C			
FAN GUARD P	FG-24P	675	661x8H	12	METAL	5	

**Fan guard type D (Metal)**



DESCRIPTION	CODE	DIMENSION (mm.)			MATERIAL	QUANTITY PCS/BOX	UNIT PRICE
		A	B	C			
FAN GUARD D	FG-20D	575	558x4H	80	METAL	10	

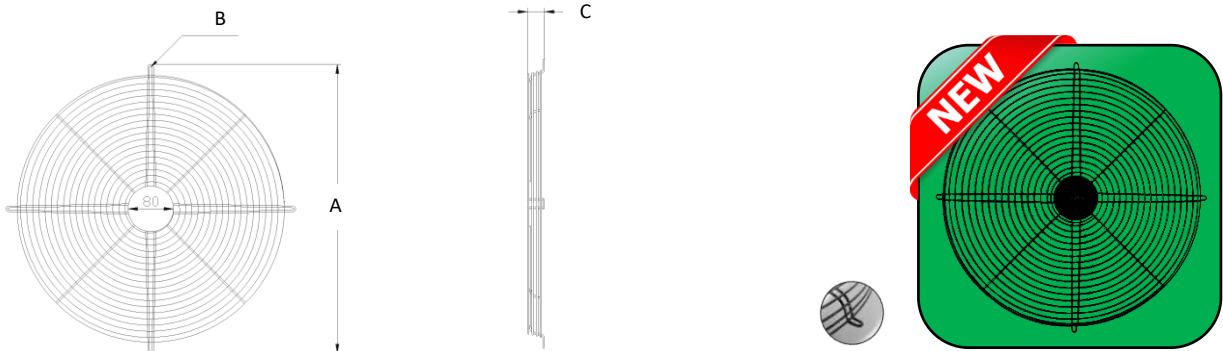


S.P.E. PLASTIC CO., LTD. with ISO9001:2015 certified



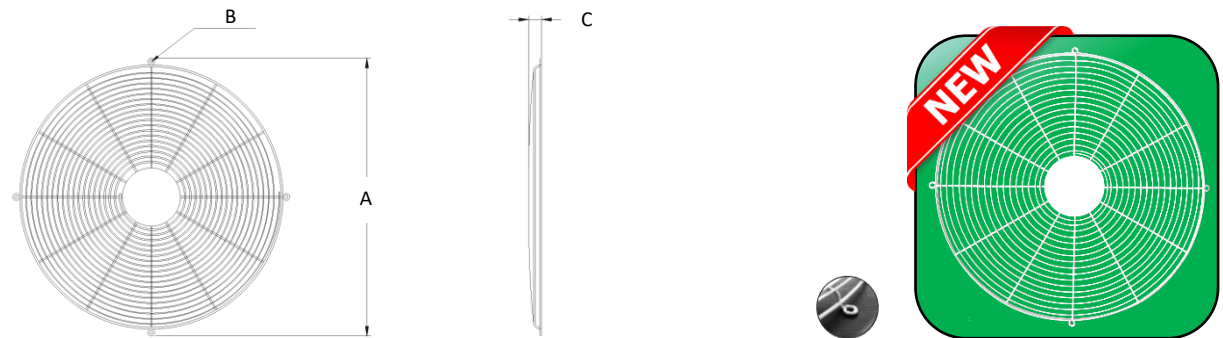
Address 45, 47, 49, 51, 53, 55 Soi Rama2(44) Rama2 Rd. T.Chomthong A.Chomthong 10150 Bangkok Thailand  
 Tel: +662 898 4974-75 Fax: +662 898 4977 E-mail: contact@speplastic.com, sales@speplastic.com Website: www.speplastic.com

**Fan guard type E (metal)**



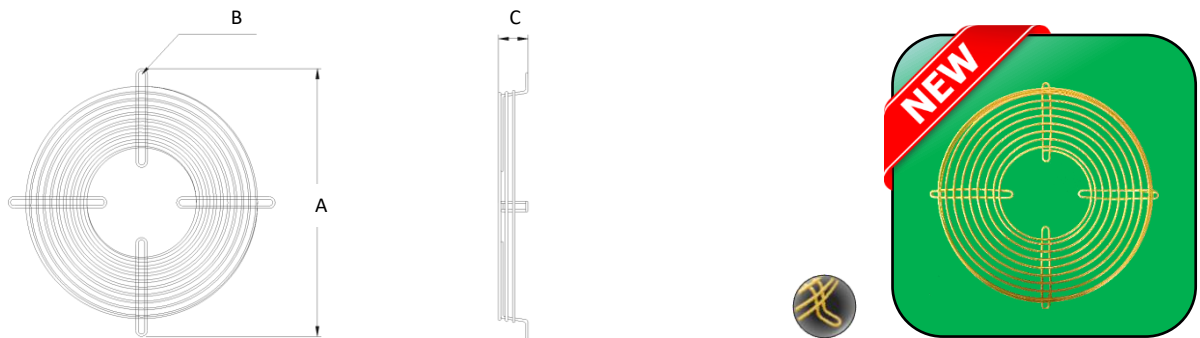
DESCRIPTION	CODE	DIMENSION (mm.)			MATERIAL	QUANTITY PCS/BOX	UNIT PRICE
		A	B	C			
FAN GUARD E	FG-18E	510	500x4H	30	METAL	10	

**Fan guard type O (metal)**



DESCRIPTION	CODE	DIMENSION (mm.)			MATERIAL	QUANTITY PCS/BOX	UNIT PRICE
		A	B	C			
FAN GUARD O	FG-18O	494	483x4H	30	METAL	10	
	FG-20O	545	530x4H	34			

**Chiller fan guard**



DESCRIPTION	CODE	DIMENSION (mm.)			MATERIAL	QUANTITY PCS/BOX	UNIT PRICE
		A	B	C			
FAN GUARD	FG-11	325	311x4H	36	METAL	10	



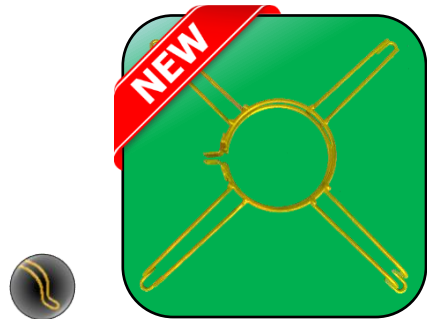
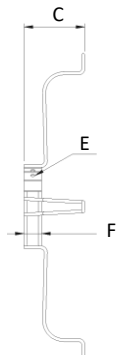
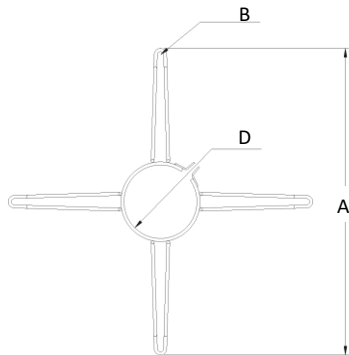
S.P.E. PLASTIC CO., LTD. with ISO9001:2015 certified



Address 45, 47, 49, 51, 53, 55 Soi Rama2(44) Rama2 Rd. T.Chomthong A.Chomthong 10150 Bangkok Thailand

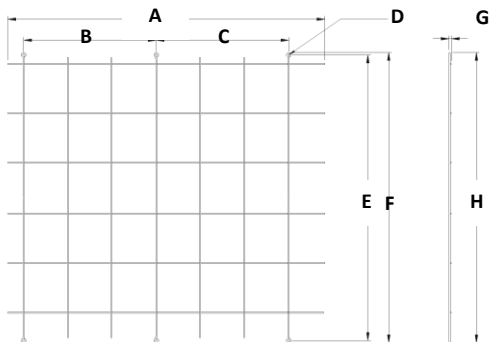
Tel: +662 898 4974-75 Fax: +662 898 4977 E-mail: contact@speplastic.com, sales@speplastic.com Website: www.speplastic.com

**Motor support**

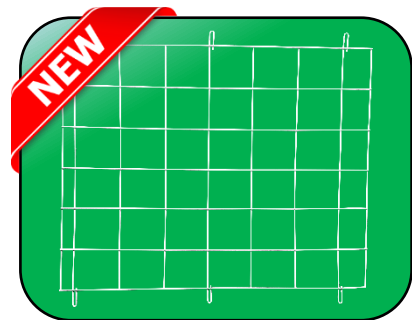
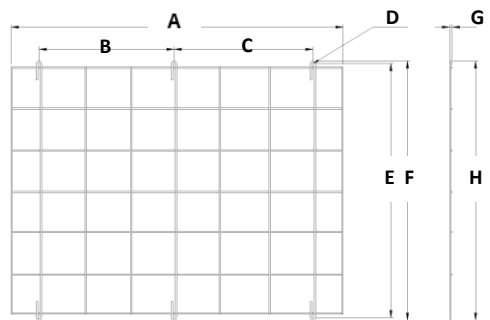


DESCRIPTION	CODE	DIMENSION (mm.)						MATERIAL	QUANTITY PCS/BOX	UNIT PRICE
		A	B	C	D	E	F			
MOTOR SUPPORT	MSM-1	586	560x4H	115	Ø142	Ø9	33	METAL		

**Condensing guard (metal)**



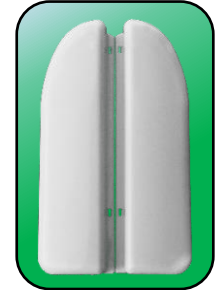
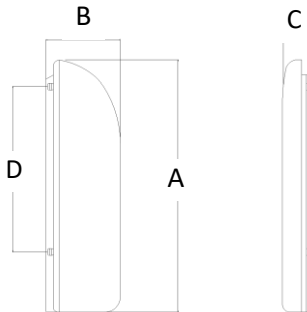
DESCRIPTION	CODE	DIMENSION (mm.)								MATERIAL	QUANTITY PCS/BOX	UNIT PRICE
		A	B	C	D	E	F	G	H			
CONDENSING GUARD	FG-B70555	789	330	Ø6	709	720	6	720	METAL	10		



DESCRIPTION	CODE	DIMENSION (mm.)								MATERIAL	QUANTITY PCS/BOX	UNIT PRICE
		A	B	C	D	E	F	G	H			
CONDENSING GUARD	FG-B69122SG	750	305	314	Ø6	571	583	6	583	METAL	10	

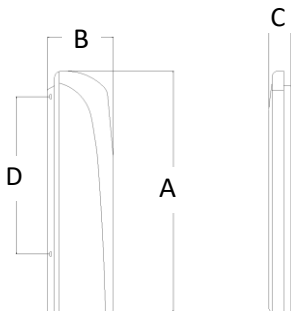


### Side panel A



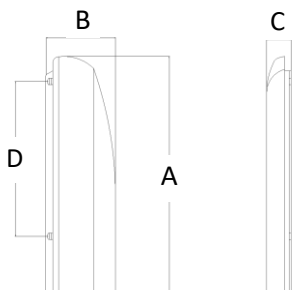
DESCRIPTION	CODE	DIMENSION (mm.)				MATERIAL	QUANTITY PCS/BOX	UNIT PRICE
		A	B	C	D			
SIDE PANEL –A-L	SPA-L	610	174	70	395	ABS	10	
SIDE PANEL –A-R	SPA-R							

### Side panel P



DESCRIPTION	CODE	DIMENSION (mm.)				MATERIAL	QUANTITY PCS/BOX	UNIT PRICE
		A	B	C	D			
SIDE PANEL –P-L	SPP-L	600	165	50	400	ABS	14	
SIDE PANEL –P-R	SPP-R							

### Side panel U

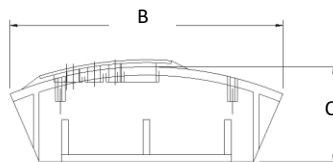
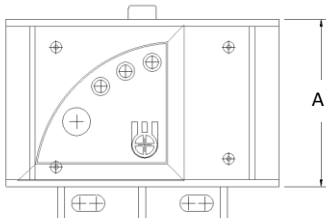


DESCRIPTION	CODE	DIMENSION (mm.)				MATERIAL	QUANTITY PCS/BOX	UNIT PRICE
		A	B	C	D			
SIDE PANEL –U-L	SPU-L	605	176	50	395	ABS	14	
SIDE PANEL –U-R	SPU-R							

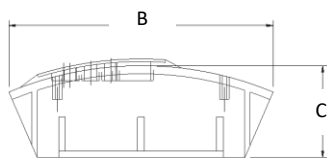
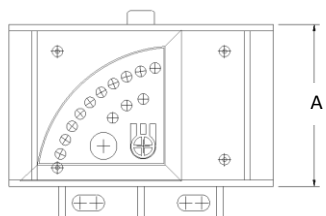


Address 45, 47, 49, 51, 53, 55 Soi Rama2(44) Rama2 Rd. T.Chomthong A.Chomthong 10150 Bangkok Thailand  
 Tel: +662 898 4974-75 Fax: +662 898 4977 E-mail: contact@speplastic.com, sales@speplastic.com Website: www.speplastic.com

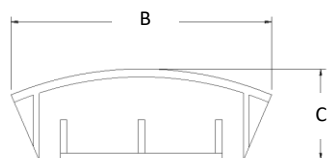
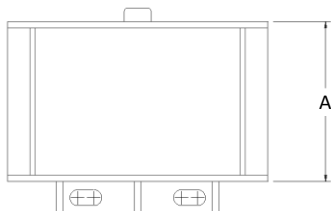
**Display & Support bar**



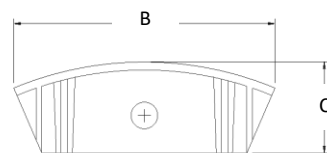
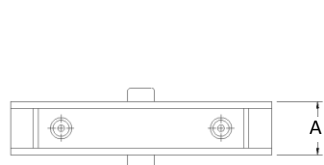
DESCRIPTION	CODE	DIMENSION (mm.)			MATERIAL	QUANTITY PCS/BOX	UNIT PRICE
		A	B	C			
DISPLAY	DP1	60	98	34	ABS		



DESCRIPTION	CODE	DIMENSION (mm.)			MATERIAL	QUANTITY PCS/BOX	UNIT PRICE
		A	B	C			
DISPLAY	DP2	60	98	34	ABS		



DESCRIPTION	CODE	DIMENSION (mm.)			MATERIAL	QUANTITY PCS/BOX	UNIT PRICE
		A	B	C			
SUPPORT BAR	BL60	60	98	34	ABS		



DESCRIPTION	CODE	DIMENSION (mm.)			MATERIAL	QUANTITY PCS/BOX	UNIT PRICE
		A	B	C			
SUPPORT BAR	BM20	20	98	34	ABS		
	BM40	42					



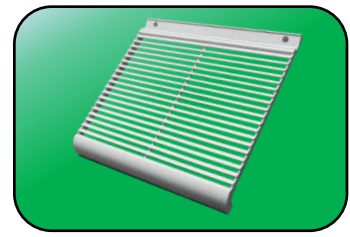
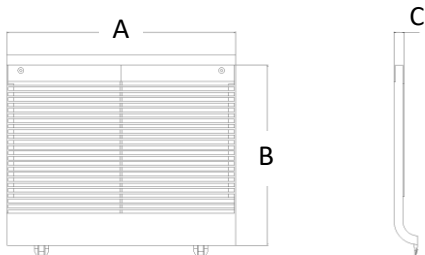
S.P.E. PLASTIC CO., LTD. with ISO9001:2015 certified



Address 45, 47, 49, 51, 53, 55 Soi Rama2(44) Rama2 Rd. T.Chomthong A.Chomthong 10150 Bangkok Thailand

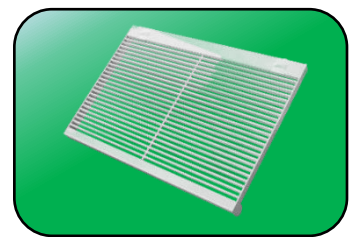
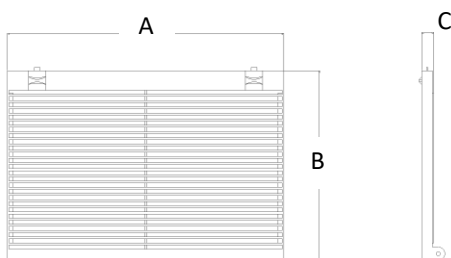
Tel: +662 898 4974-75 Fax: +662 898 4977 E-mail: contact@speplastic.com, sales@speplastic.com Website: www.speplastic.com

### Return A



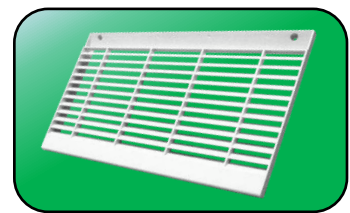
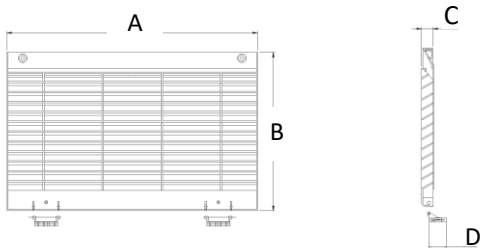
DESCRIPTION	CODE	DIMENSION (mm.)			MATERIAL	QUANTITY PCS/BOX	UNIT PRICE
		A	B	C			
RETURN -A	RT300-A	300	310	17	ABS		
	RT396-A	396					
	RT450-A	450					

### Return C



DESCRIPTION	CODE	DIMENSION (mm.)			MATERIAL	QUANTITY PCS/BOX	UNIT PRICE
		A	B	C			
RETURN -C	RT300-C	300	271	17	ABS	38	
	RT396-C	396					
	RT425-C	425					
	RT450-C	450					

### Return P



DESCRIPTION	CODE	DIMENSION (mm.)				MATERIAL	QUANTITY PCS/BOX	UNIT PRICE	
		A	B	C	D				
RETURN -P	RT380	380	240	17	12	ABS/HIPS	50		
	RT410	410							
	RT430	430							
	RT460	460							48



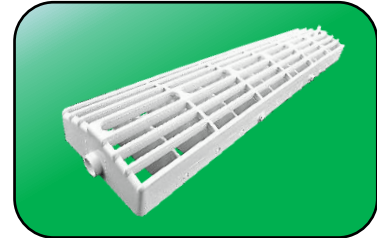
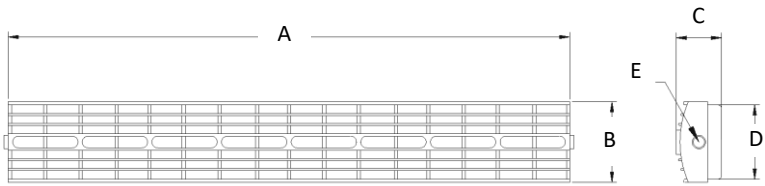
S.P.E. PLASTIC CO., LTD. with ISO9001:2015 certified



Address 45, 47, 49, 51, 53, 55 Soi Rama2(44) Rama2 Rd. T.Chomthong A.Chomthong 10150 Bangkok Thailand

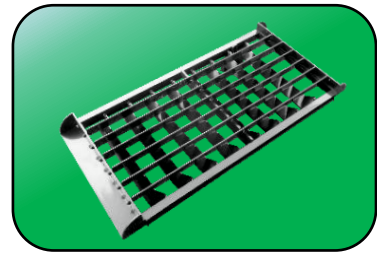
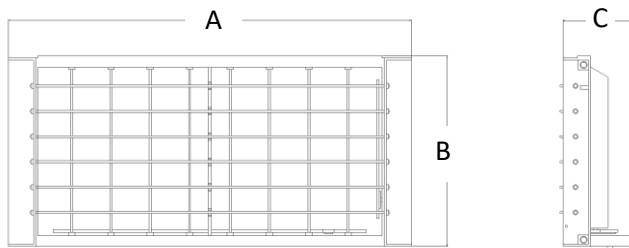
Tel: +662 898 4974-75 Fax: +662 898 4977 E-mail: contact@speplastic.com, sales@speplastic.com Website: www.speplastic.com

**Discharge grill for split type air-conditioner**



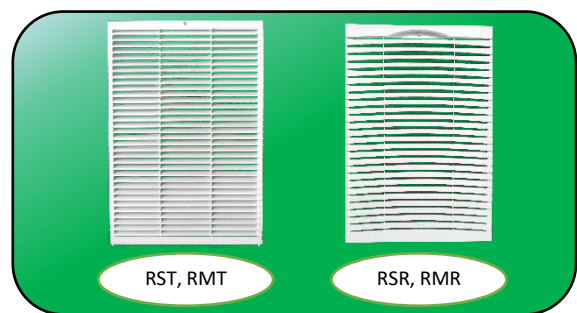
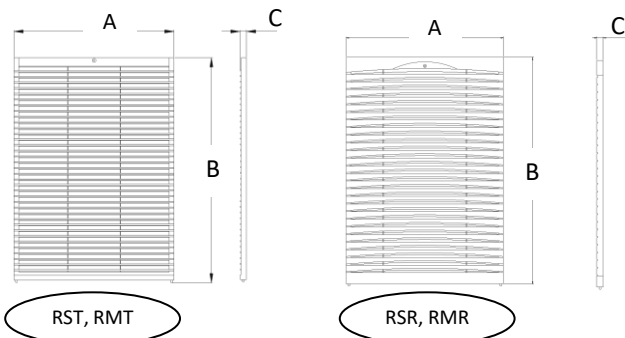
DESCRIPTION	CODE	DIMENSION (mm.)					MATERIAL	QUANTITY PCS/BOX	UNIT PRICE
		A	B	C	D	E			
DISCHARG GRILL	DG370	370	75	45	65	10	ABS		
	DG438	438							
	DG520	520							

**Discharge grill for package type air-conditioner**



DESCRIPTION	CODE	DIMENSION (mm.)			SWING BLADES	ADJUST BLADES	MATERIAL	QUANTITY PCS/BOX	UNIT PRICE
		A	B	C					
DISCHARG GRILL	P S	573	271	104	8	6	ABS	7	
	P M	825			12	6		5	
	P L	1,072			16	6			

**Return grill for package type air-conditioner**



DESCRIPTION	CODE	DIMENSION (mm.)			MATERIAL	QUANTITY PCS/BOX	UNIT PRICE
		A	B	C			
RETURN GRILL	RST	492	720	20	ABS	10	
	RMT	741					
	RSR	495					
	RMR	741					





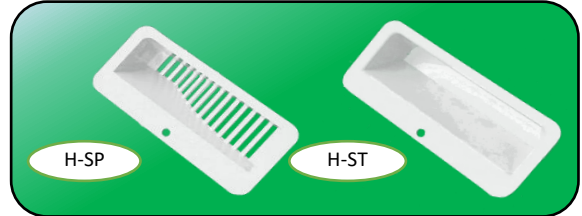
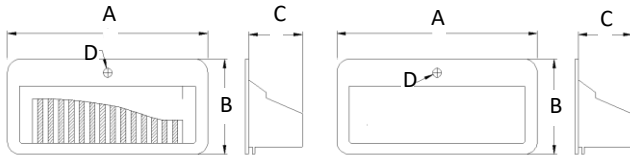
S.P.E. PLASTIC CO., LTD. with ISO9001:2015 certified



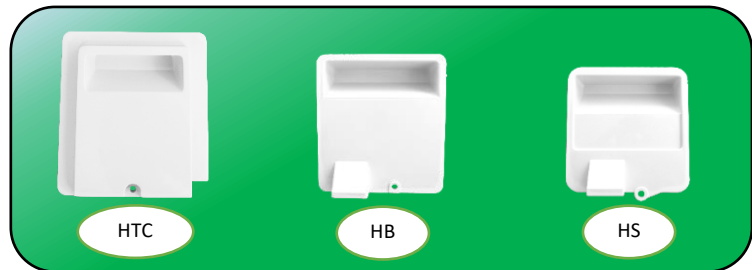
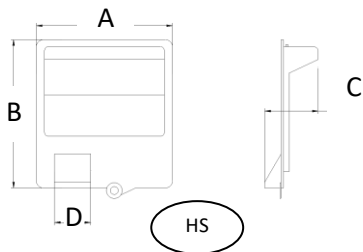
Address 45, 47, 49, 51, 53, 55 Soi Rama2(44) Rama2 Rd. T.Chomthong A.Chomthong 10150 Bangkok Thailand

Tel: +662 898 4974-75 Fax: +662 898 4977 E-mail: contact@speplastic.com, sales@speplastic.com Website: www.speplastic.com

## Handle bar

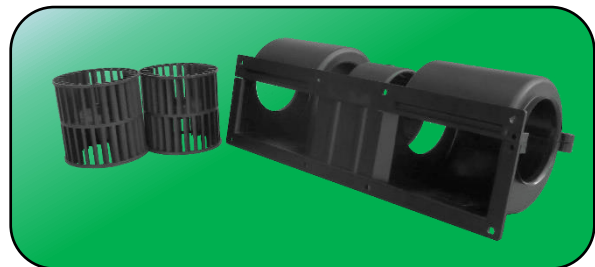
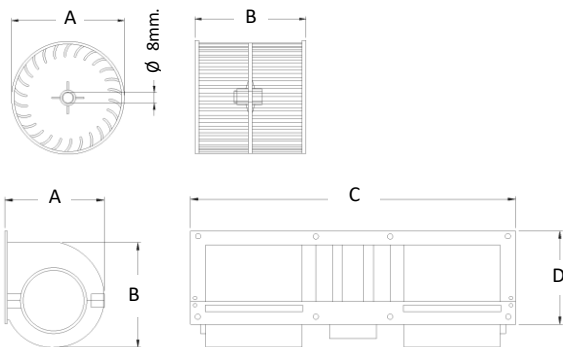


DESCRIPTION	CODE	DIMENSION (mm.)				MATERIAL	QUANTITY PCS/BOX	UNIT PRICE
		A	B	C	D			
HANDLE-S	H-SP	117	52	32	5	ABS		
HANDLE-R	H-ST							



DESCRIPTION	CODE	DIMENSION (mm.)				MATERIAL	QUANTITY PCS/BOX	UNIT PRICE
		A	B	C	D			
HANDLE-TC	H-TC	130	145	24	-	ABS		
HANDLE-B	H-B	126.5	116.5	30	32			
HANDLE-S	H-S	113						

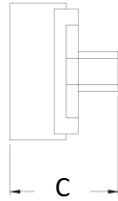
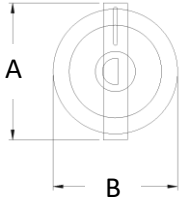
## Blower set for vehicle



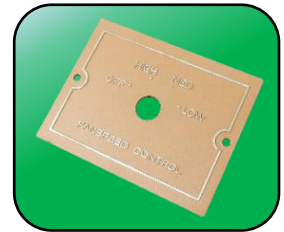
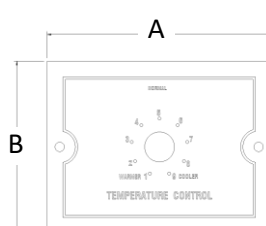
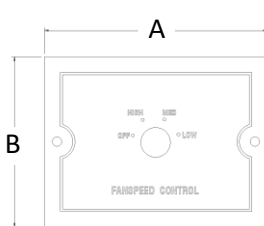
DESCRIPTION	CODE	DIMENSION (mm.)				Blades	HUB	MATERIAL	QUANTITY PCS/BOX	UNIT PRICE
		A	B	C	D					
VEHICLE BLOWER	FM-1B3526	86	87	-	-	26	8	ABS+FIBER		
	FM-1BB35	65	69	355	102	-	-	ABS		



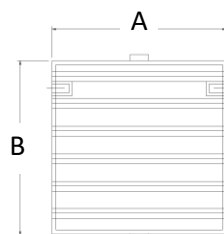
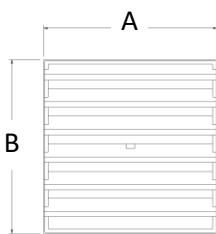
## Accessories



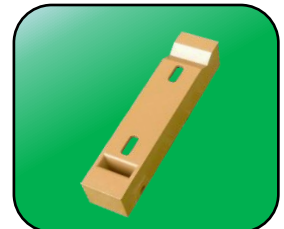
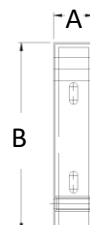
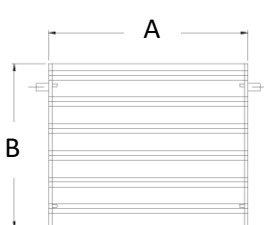
DESCRIPTION	CODE	DIMENSION (mm.)			MATERIAL	QUANTITY PCS/BOX	UNIT PRICE
		A	B	C			
KNOB	KNB1	34	31	27	ABS		



DESCRIPTION	CODE	DIMENSION (mm.)			MATERIAL	QUANTITY PCS/BOX	UNIT PRICE
		A	B	C			
SPEED CONTROL	SCTRL1	143	109	2.5	ABS		
TEMP. CONTROL	TCTRL1						



DESCRIPTION	CODE	DIMENSION (mm.)			MATERIAL	QUANTITY PCS/BOX	UNIT PRICE
		A	B	C			
DISCHARG GRILL	DSG1	113.5	113.5	30	ABS		
SUPPORT GRILL	SPG1						



DESCRIPTION	CODE	DIMENSION (mm.)			MATERIAL	QUANTITY PCS/BOX	UNIT PRICE
		A	B	C			
DOOR	DOR1	144	111	15	ABS		
BAR	BAR1	24	113	24			

# Our customers

## Thailand Domestic



## Oversea country



Bahrain



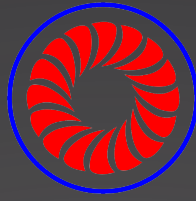
Qatar



Saudi Arabia



Sri Lanka



# S.P.E. PLASTIC CO.,LTD.

Air-conditioner plastic parts  
injection molding manufacturing

บริษัทผู้ผลิตงานฉีดพลาสติก  
กลุ่มอุตสาหกรรมชิ้นส่วนเครื่องปรับอากาศ



Address: S.P.E. PLASTIC CO., LTD. (Headquater)  
45, 47, 49, 51, 53, 55 Soi Rama2(44) Rama2 Rd.  
T. Chomthong A. Chomthong Bangkok  
Postal code 10150 Thailand

TEL: +662 898 4974 - 75  
FAX: +662 898 4977  
E-mail: [contact@speplastic.com](mailto:contact@speplastic.com)  
[sales@speplastic.com](mailto:sales@speplastic.com)



ISO9001:2015 Certified  
Certificate number 26Q19616



Thai company, Production in Thailand  
บริษัทของคนไทย, ผลิตในประเทศไทย



[www.speplastic.com](http://www.speplastic.com)  
scan QR code to enter our website

